



Boat Details

Builder	MENGI YAY
Base Port	Bodrum
Destination	Turkey
Length	37.5 m / 123.0 ft
Built / Refit	2009 / 2015
Cabins Total	4
Cabins	1 Master, 1 Vip, 2 Twin
Guests	10
Crew	6
Speed	21-27 Knots
Low Season May, October	Per Week €85,000
Mid Season June, September	Per Week €85,000
High Season July, August	Per Week €85,000

Features









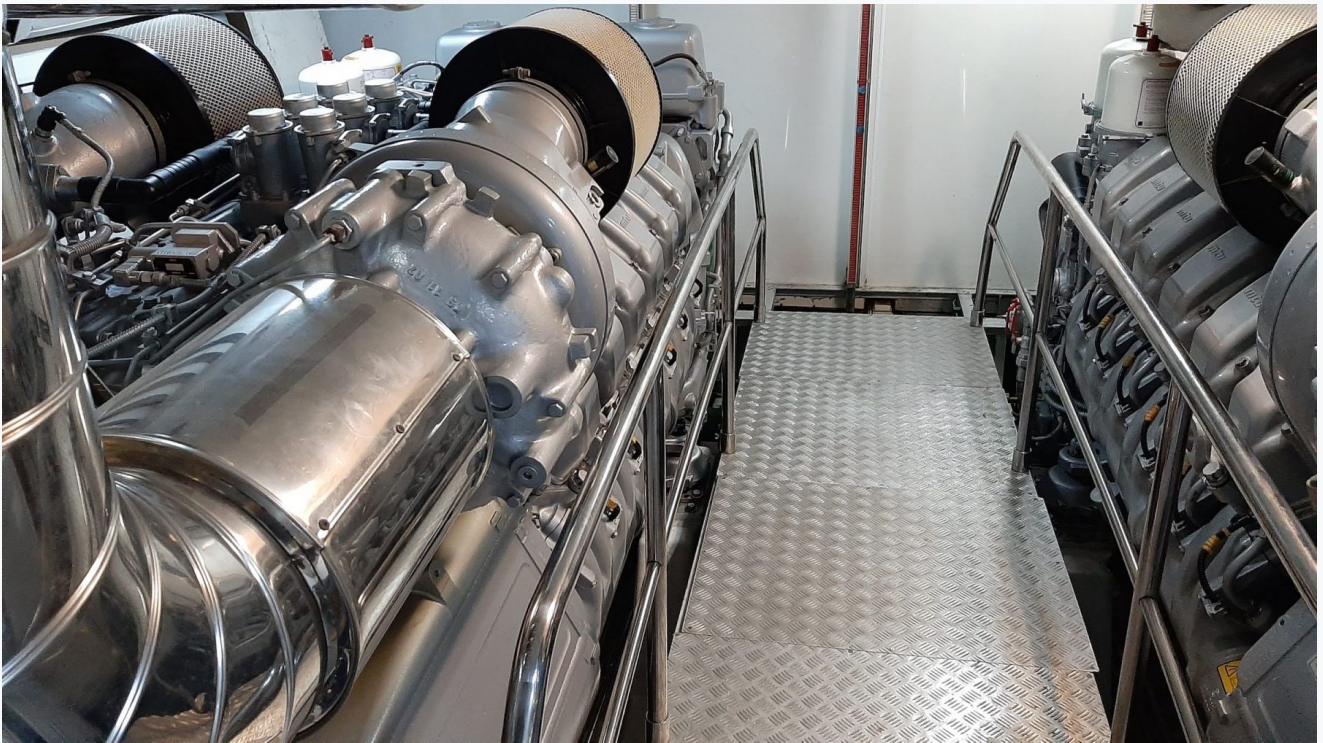












Specifications

Built / Refit 2009 / 2015
Builder MENGI YAY
Base Port Bodrum
Length 37.5 m / 123.0 ft
Beam 7.3 m / 24 ft
Draft 3.4 m / 11 ft
Speed 21-27 Knots
Main Engine(s) 2 X MTU 12V4000
Fuel Consumption 400 lt at cruising
Generator(s) 2 x 50 KVA ONAN
Hull Epoxy Laminated Wood

Accommodation

Cabins

1 Master, 1 Vip, 2 Twin

Guests

10

Crew

6

Bathroom

Ensuite with shower cells

Toilet type

Electric vacuum flush

Air-conditioning

Yes

A/C Use during night

All night

TV System

In salon and all cabins, Sattelite TV

Music System

In salon, All cabins, Deck speakers

Other Equipment

Ice machine, WiFi internet

Tenders & Toys

Tenders

Avon Seasport Jet 430

Water Toys

Jetski Seadoo PW Wake Pro 2015

Deck Equipment

Jacuzzi on flybridge

Destinations & Prices

Cruising Areas

Turkey

Charter Prices

€85,000 per week (Low Season: May, October)

€85,000 per week (Mid Season: June, September)

€85,000 per week (High Season: July, August)

Charter Terms

Charter Terms:

The Charter Fee includes the charter of the yacht with all its equipment in working order, tools, stores, cleaning material and basic consumable stores for engine-room, deck and cabins, etc., the crew's wages, food and the insurance of the yacht for marine risk and third party claims and the crew for employer's liability insurance.

APA (Advance Provisioning Allowance): The Charterer will be charged extra, at cost to the yacht, for all other expenses, which is covered by the APA , 20-40 % of the charter fee depending on the yacht and the charter period. These expenses include fuel for the yacht, fuel for the ski-boats or other tenders, food for the charterers, wines, beers, spirits and soft drinks for the Charterers, other consumable stores, berthing dues and other harbour charges away from the yacht's own berth, hire costs of special equipment placed on board at the request of the Charterer.

Crew's Gratuity is extra and usually 5-10 % of the Charter Fee.

